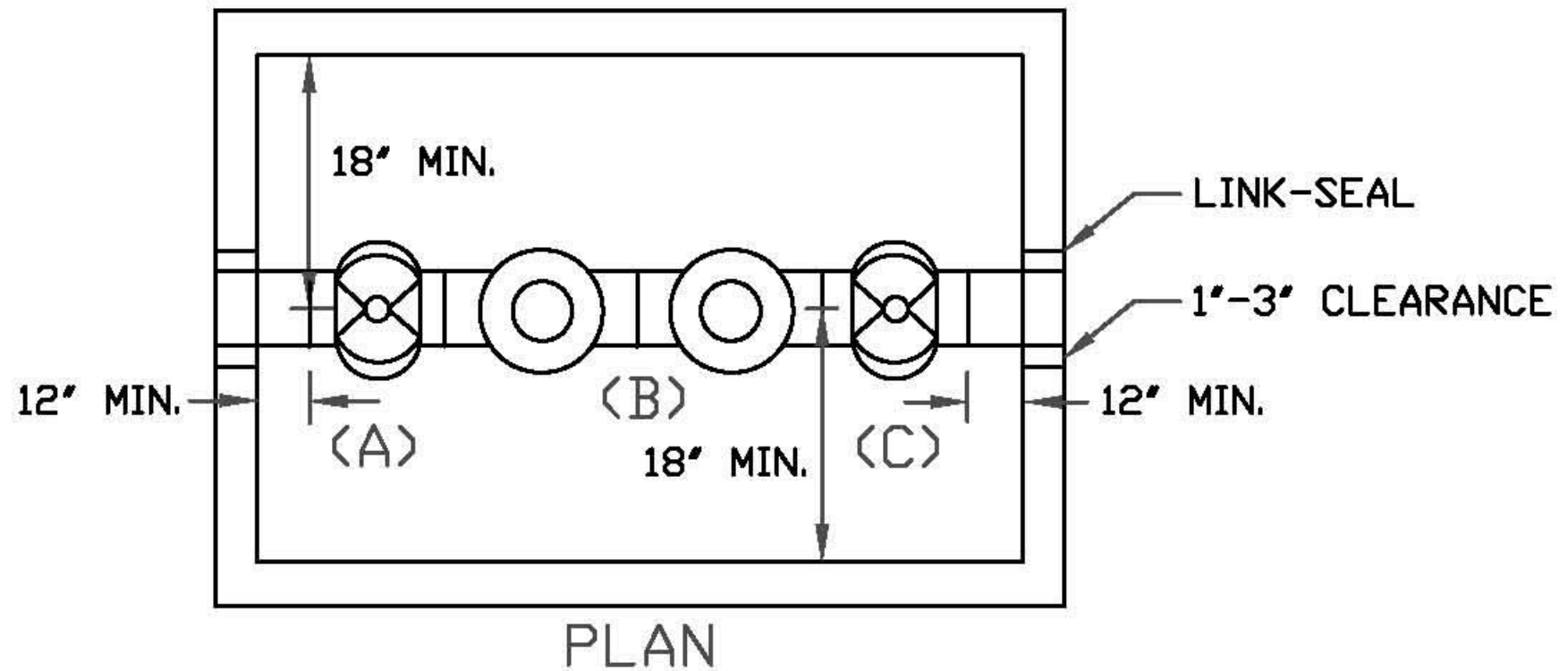


NOTE:

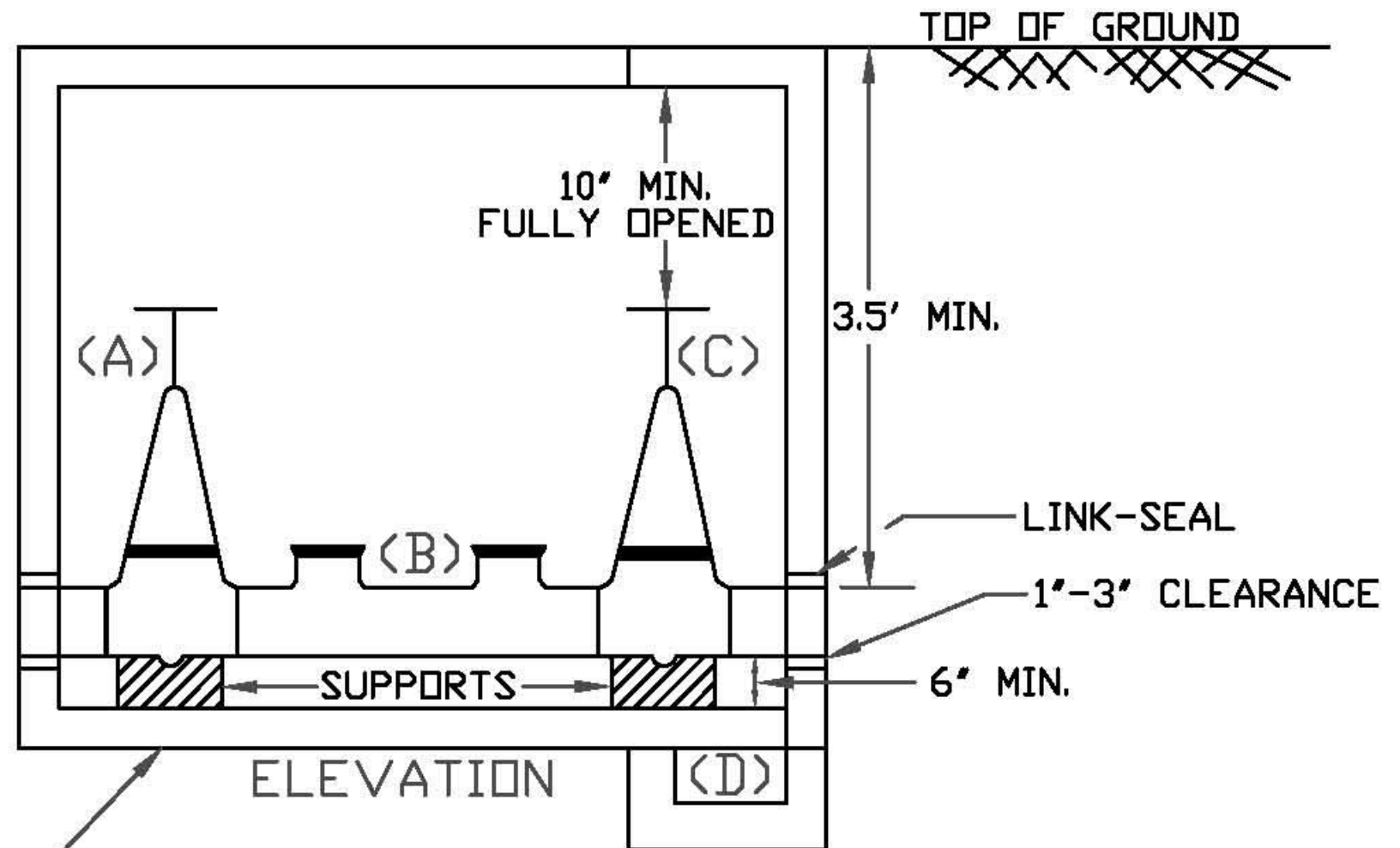
1. VAULT SHALL BE INSTALLED IN A BOX PER DETAIL D-176 OR D-177
2. DOUBLE DETECTOR CHECK ASSEMBLY MUST BE U.L. LISTED OR F.M. APPROVED AND APPROVED BY NEW KENT DEPT. OF UTILITIES.
3. THE VAULT SHALL BE WATERTIGHT. THE VAULT SHALL BE COATED ON THE OUTSIDE FACE WITH A MASTIC OR BITUMINOUS COATING TO PREVENT INFILTRATION.



- (A) OUTSIDE STEM AND YOKE GATE VALVE (D) SUMP PUMP WHERE WATER TABLE IS A PROBLEM OR GRAVITY DRAIN WHERE WATER TABLE IS NOT
- (B) DOUBLE CHECK DEVICE
- (C) OUTSIDE STEM AND YOKE GATE VALVE

VAULT SHALL BE AS MANUFACTURED BY CARSON-BROOKS PLASTICS, LTD. (MODEL #2436-31 3/4" X 43 1/2" X 48") OR APPROVED EQUAL (SIZE NECESSARY TO MEET MINIMUM VAULT STANDARDS).

BOX WITH CONCRETE BASE AND DOUBLE CHECK MUST BE SUPPORTED BY POURED IN PLACE CONCRETE PIPE SADDLES OR METAL PIPE STANDS [COATED WITH RUST RETARDANT] COATING.



ELEVATION