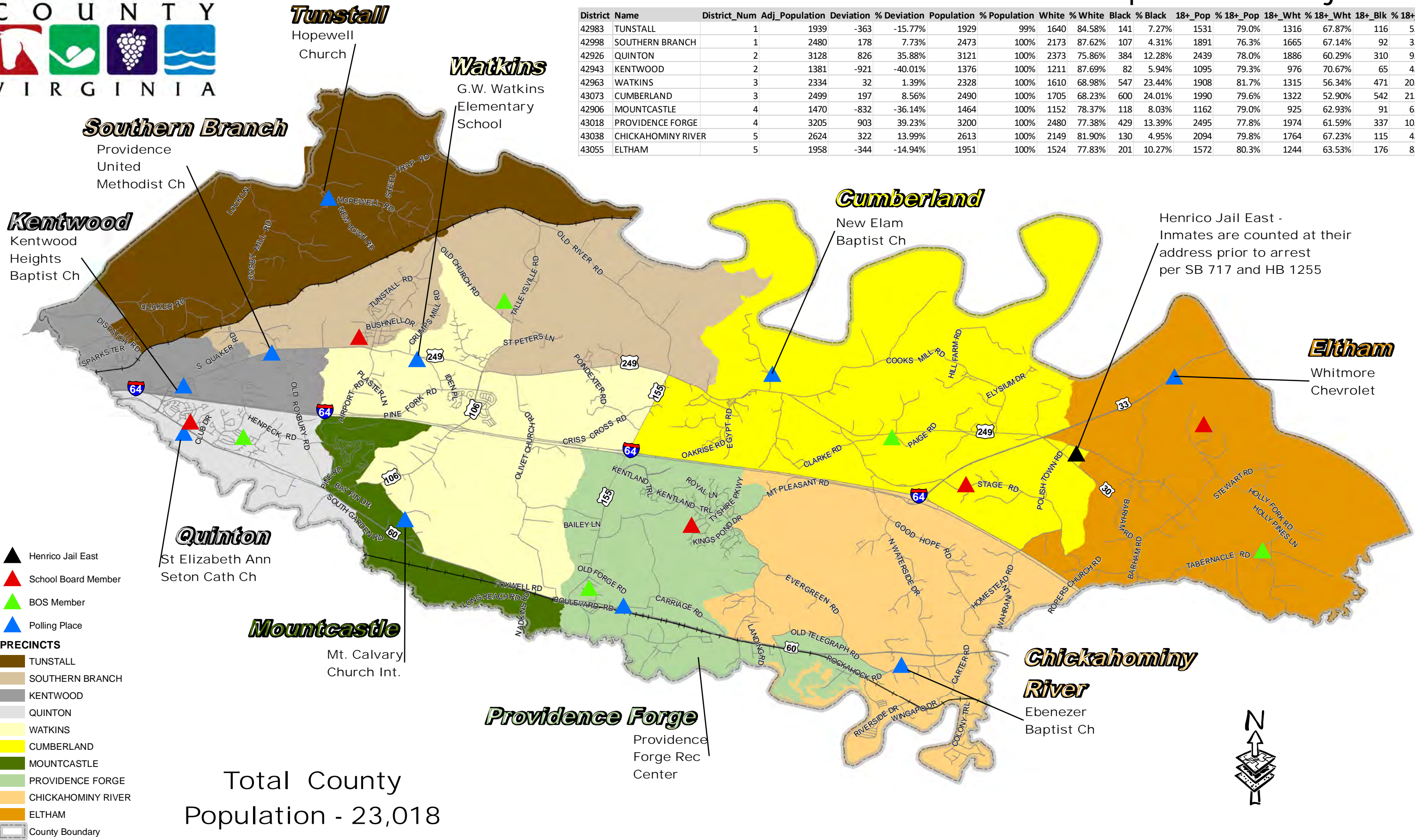


Precincts - Plan 1A - Prison Population Adjusted

District Name	District_Num	Adj_Population	Deviation	% Deviation	Population	% Population	White	% White	Black	% Black	18+_Pop	% 18+_Pop	18+_Wht	% 18+_Wht	18+_Blk	% 18+_Blk
42983 TUNSTALL	1	1939	-363	-15.77%	1929	99%	1640	84.58%	141	7.27%	1531	79.0%	1316	67.87%	116	5.98%
42998 SOUTHERN BRANCH	1	2480	178	7.73%	2473	100%	2173	87.62%	107	4.31%	1891	76.3%	1665	67.14%	92	3.71%
42926 QUINTON	2	3128	826	35.88%	3121	100%	2373	75.86%	384	12.28%	2439	78.0%	1886	60.29%	310	9.91%
42943 KENTWOOD	2	1381	-921	-40.01%	1376	100%	1211	87.69%	82	5.94%	1095	79.3%	976	70.67%	65	4.71%
42963 WATKINS	3	2334	32	1.39%	2328	100%	1610	68.98%	547	23.44%	1908	81.7%	1315	56.34%	471	20.18%
43073 CUMBERLAND	3	2499	197	8.56%	2490	100%	1705	68.23%	600	24.01%	1990	79.6%	1322	52.90%	542	21.69%
42906 MOUNTCASTLE	4	1470	-832	-36.14%	1464	100%	1152	78.37%	118	8.03%	1162	79.0%	925	62.93%	91	6.19%
43018 PROVIDENCE FORGE	4	3205	903	39.23%	3200	100%	2480	77.38%	429	13.39%	2495	77.8%	1974	61.59%	337	10.51%
43038 CHICKAHOMINY RIVER	5	2624	322	13.99%	2613	100%	2149	81.90%	130	4.95%	2094	79.8%	1764	67.23%	115	4.38%
43055 ELTHAM	5	1958	-344	-14.94%	1951	100%	1524	77.83%	201	10.27%	1572	80.3%	1244	63.53%	176	8.99%



- ▲ Henrico Jail East
- ▲ School Board Member
- ▲ BOS Member
- ▲ Polling Place

- PRECINCTS**
- TUNSTALL
 - SOUTHERN BRANCH
 - KENTWOOD
 - QUINTON
 - WATKINS
 - CUMBERLAND
 - MOUNTCASTLE
 - PROVIDENCE FORGE
 - CHICKAHOMINY RIVER
 - ELTHAM
- County Boundary
 — Railroads
 — Roads

Total County Population - 23,018

Providence Forge
Providence Forge Rec Center

Chickahominy River
Ebenezer Baptist Ch

